

**Table of Contents:**

■ System Overview.....	2	■ Accessibility.....	9
■ Suspension System Installation.....	4	■ Service Integration.....	10
■ Baffle Installation.....	7	■ Cleaning.....	10

# Rockfon® Sequence® Linear Metal Beam Baffles

## RockLock™ Carrier Mount Baffle Installation Guide



## System Overview

The Rockfon Sequence system is a metal ceiling system comprised of metal beam baffles, produced from aluminum. These metal beam baffles are offered in varying widths, heights and lengths up to 8', and can be installed in long, linear runs, adding depth and variety to a ceiling space. These metal beam baffles are offered in various finishes, including Rockfon's standard offering, the 34 Color-All™ colors of well-being, and woodgrains from each of Rockfon's Woodlands™, Metalwood® and Woodscenes® finishes.

This installation guide will focus on installing Sequence Linear Beam Baffles into the Rockfon RockLock™ Carrier System. The RockLock Carrier is a self-squaring suspension system, consisting of 10' length carriers that are pre-notched per your project's baffle spacing. These suspension members feature a smooth surface in between notches, resulting in a seamless installation. The RockLock Carrier System is designed to save time and labor, reducing in-field measurements for baffle spacing and cross member installation.

The RockLock Carrier is produced to accommodate specific baffle widths and spacings per the project being supplied. It is recommended that shop drawings be completed prior to the project to ensure proper carrier is produced and used. Consult Rockfon Specialty Services at [Estimating@rockfon.com](mailto:Estimating@rockfon.com) to initiate shop drawing requests.

[Visit Sequence Product Page](#)

## Best Practices

Always follow good safety practices when installing ceilings. Prior to beginning installation ensure that all materials are received and in good condition. Record any shipping damage on the carrier's bill of lading and contact Rockfon immediately to order replacement material:

- Email: [cs@rockfon.com](mailto:cs@rockfon.com)
- Fax: 866-211-3824
- Customer Service: 800-323-7164

If there are any issues with your order, contact Customer Service at 1-800-323-7164, telephone option 1.

E-mail replacement material orders, including your purchase order number on document, to [cs@rockfon.com](mailto:cs@rockfon.com).

For technical assistance, contact Technical Services at 1-800-323-7164, telephone option 2.

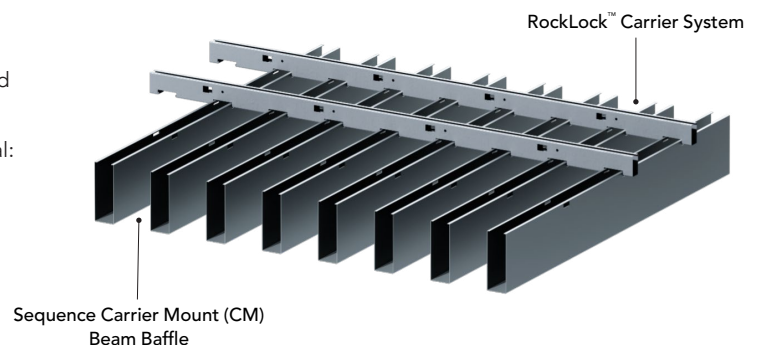
## Installation Condition

### Temperature and Humidity

Avoid installation in high moisture conditions where the space is not properly ventilated and acclimatized. Rockfon Sequence should be installed in a clean environment, free from construction dust and debris.

### Handling

Baffles come shipped in cartons and should be stored in a dry location. Prior to installation, inspect the cartons for damage. Use care in handling and removing the baffles. It is recommended to use clean gloves with a non-marking rubber/latex coating or polyethylene gloves when handling Rockfon metal ceiling products to avoid contamination. For baffles longer than 4' it is recommended that two installers handle the baffles when moving or installing into the ceiling plane.



## Reference Documentation

Several industry standards are published and available.

Acoustical and metal ceiling installers should familiarize themselves with these installation methods and best practices recommended for ceiling systems.

Prior to installation, it is imperative the installer become familiar with any project specific documentation available. These items will confirm ceiling layout, baffle sizes and finish, ceiling accessories, ceiling fixture layout and orientation, and any special edge conditions.

## Industry Standard Documentation

- ASTM C636 (Standard Practice for Installation of Metal Ceiling Suspension Systems for Acoustical Tile and Lay-In Baffles)
- CISA Metal Ceilings Technical Guidelines
- CISCA Ceiling Systems Handbook

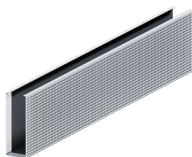
## Project Specific Documentation

- Reflected Ceiling Plans
- Project Specifications
- Approved Project Submittals (data sheets, shop drawings)

## Tools Required

- Laser or Leveling Device
- Miter Saw/Circular Saw
- Marking tool (pencil)
- Square Nose Side Cutter
- Clean Gloves
- Aviation Snips
- Tape Measure
- Slot Screwdriver
- Phillips Screwdriver

## System Components



Sequence Carrier Mount (CM) Baffle



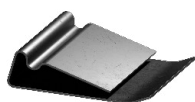
RockLock™ Carrier



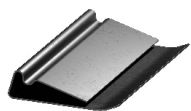
Sequence Baffle Splice



Sequence Baffle End Cap



1" Indexing Clip



2" Indexing Clip



Wall Angle



RockLock™ Carrier Splice

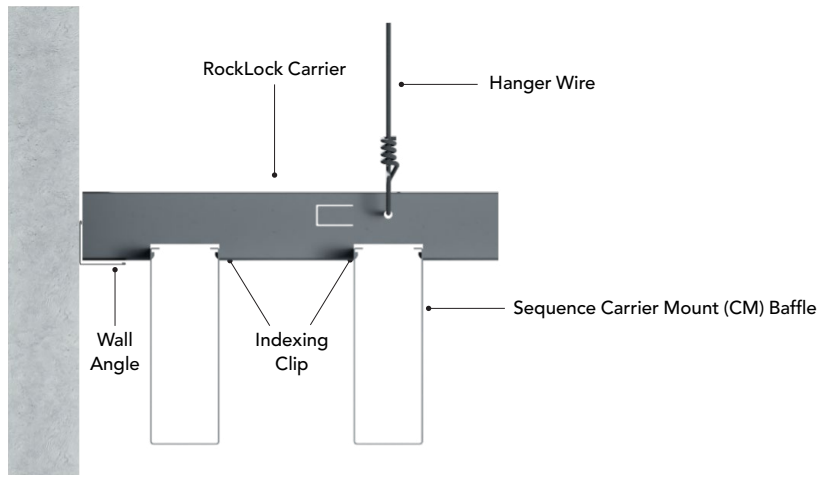
# 1. Suspension System Installation

All suspension must be installed per ASTM C636 including local building codes and standards. Special attention should be given to the levelness of the system and alignment of carrier notches. Failure to have a level system and alignment of carrier notches will create a poor aesthetic appearance with baffles not suspending straight, and difficulty in installing the baffles. Use minimum 12 gauge galvanized steel hanger wire per ASTM C636 for suspending the carrier.

## 1.1 Secure the Specified Perimeter Treatment to the Walls Using Appropriate Fasteners

Reference any project documents for proper ceiling elevation.

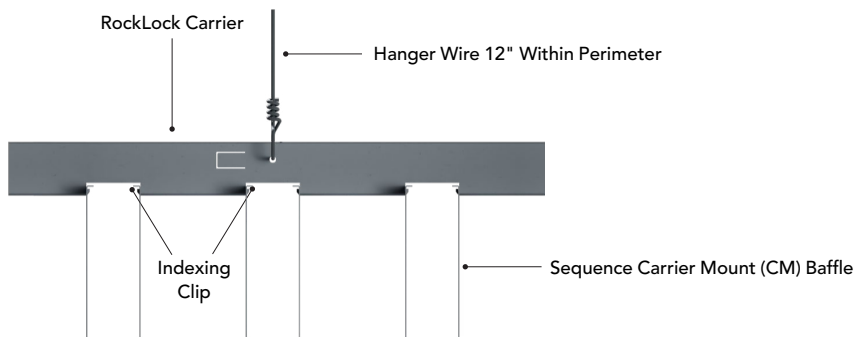
### Wall Installation



## 1.2 Floating Installation

Floating installations may be accomplished by simply cutting back RockLock Carrier.

Cut back carrier to desired length overhanging baffle. Additional hanger wires are required to support cantilevered carrier. These hangers should be within 12" of perimeter.



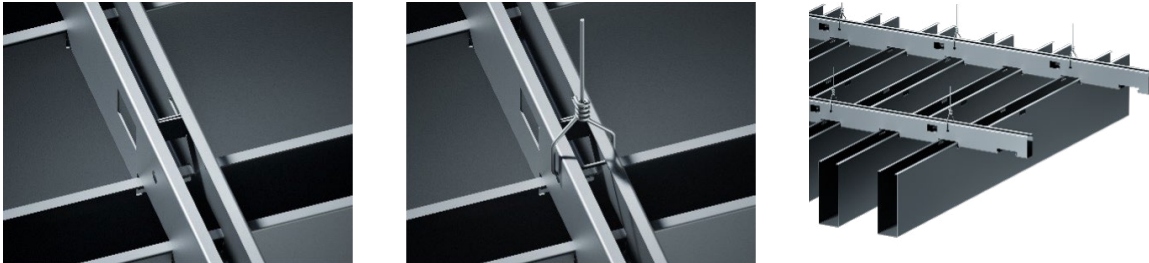
### Hanger Wire Installation with RockLock TensoTab™

Determine baffle direction and layout RockLock carrier perpendicular to the baffle direction. RockLock carriers are installed 48" OC.

The RockLock carrier is a self-squaring suspension system – no additional cross tees are required in this installation.

At hanger wire locations, the RockLock carrier system TensoTabs can be utilized to maintain carrier stability when tying hanger wires.

Simply push preset tabs inwards, overlapping opposite tabs. These tabs will maintain carrier's structural integrity, allowing easy hanger wire installation.

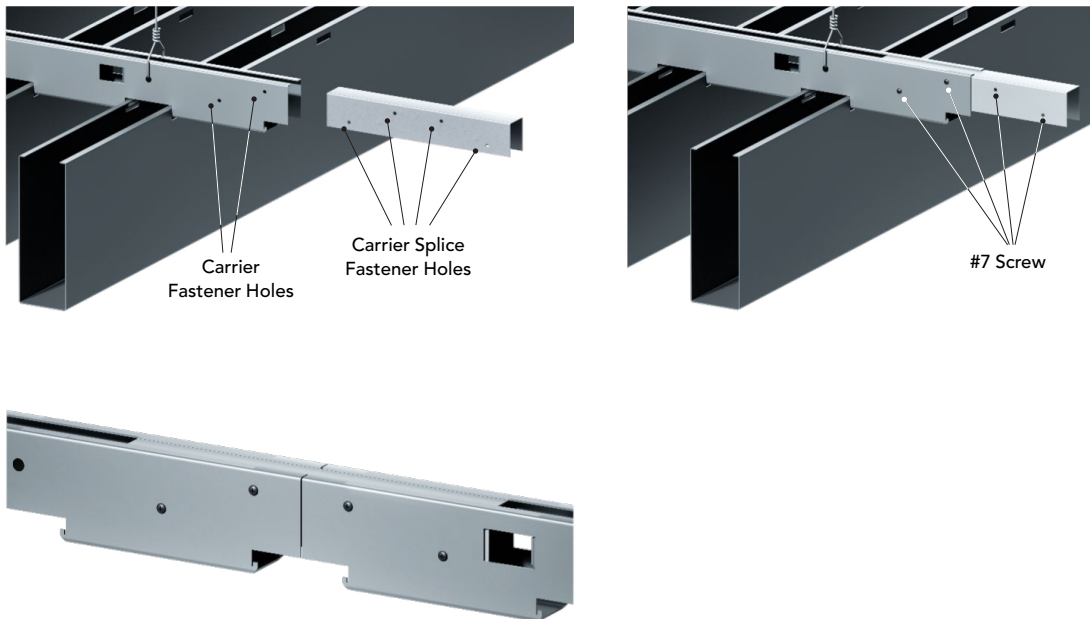


### 1.3 RockLock Carrier Splices

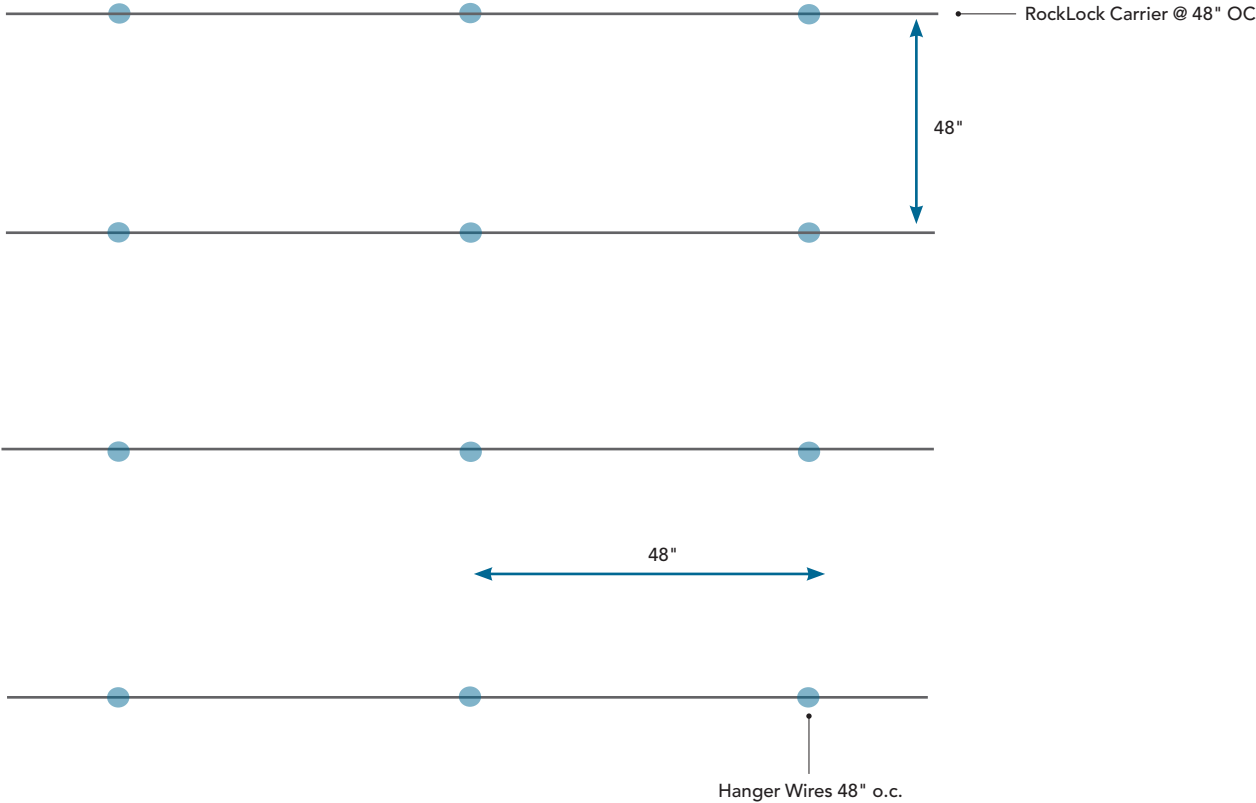
Longer runs of RockLock carriers, over 10' in length, require a splice connection. RockLock splices should be installed by first inserting into the open end of the RockLock carrier until holes align with fastener holes on the carrier system.

Once holes are aligned, install 4 #7 screws to fasten together. It is best practice for the splice locations to be staggered from carrier to carrier. Rockfon recommends installing one side of splice to carrier on the ground, prior to suspending carrier, for easiest installation.

**Note:** Ensure RockLock carrier notches are aligned and in the same plane from carrier to carrier. Install suspension members level and square.



Typical Suspension Layout for RockLock Carrier

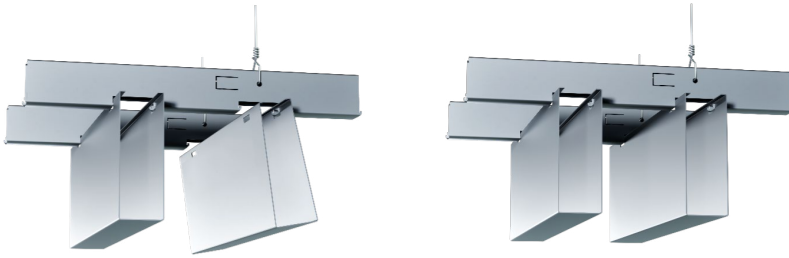


## 2. Baffle Installation

Double check the suspension system is level prior to baffle installation. For best aesthetics, plan baffle layout so that baffle joints/splices are staggered. Avoid having baffle splice connections at carrier connections. The RockLock carrier system is pre-notched per on-center baffle spacing required for project. Ensuring notches are aligned.

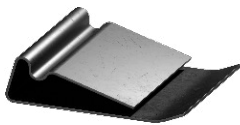
### 2.1 Baffle Installation

Align punches on top edges of the baffle with pre-set notches of the RockLock carrier. Gently and simultaneously apply pressure inwards to both top edges of the baffle, allowing necessary clearance for baffle to insert into RockLock carrier notch. Once inserted, relieve pressure – the RockLock carrier notches will engage with baffle punches and lock into place. Each baffle should be supported by a minimum of 2 carriers. Pressure should be applied to top edges of the baffle only – avoid applying pressure to bottom portion of the baffle.

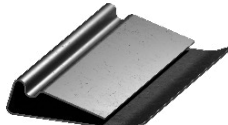


### 2.2 Baffle Indexing Retention Clips

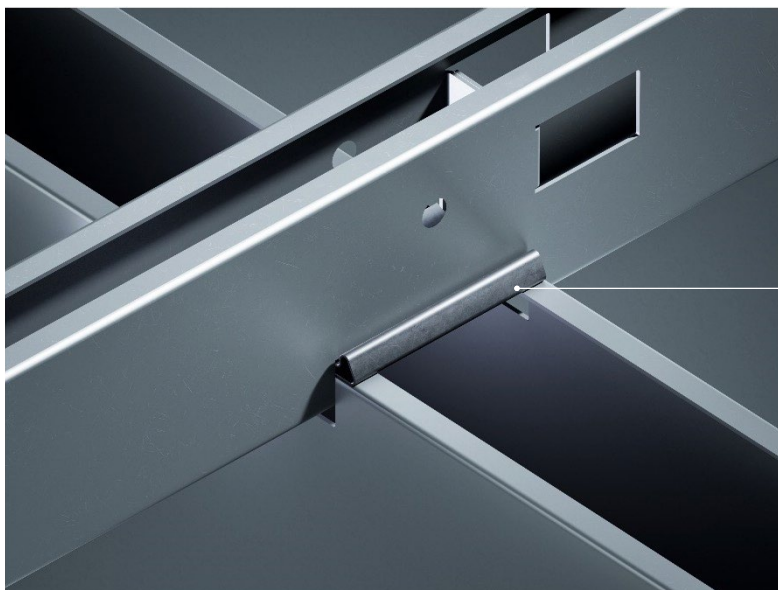
Indexing clips **must be used** at connections between baffle and RockLock Carrier Notches. Use 1" or 2" clips dependent on baffle widths being used. Simply install clip over baffles top flanges, underneath carrier notch, until an audible click is heard.



1" Indexing Clip



2" Indexing Clip

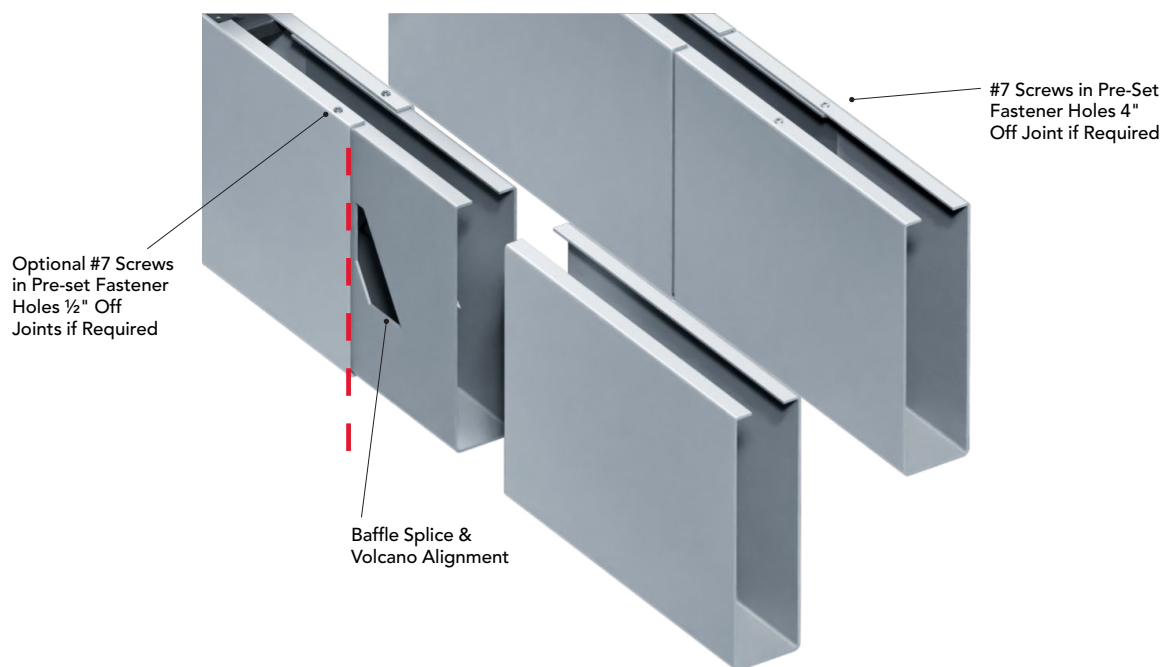


Indexing Clip Installed

## 2.3 Baffles Splices

Install splices by inserting splice into open end of baffle. Center splice evenly between two baffles, utilizing the center of the Rockfon volcano as an alignment point. Use #7 screws on pre-set fastener holes 4" away from baffle joints to support alignment.

**Note:** Once splice is aligned using volcano, fastener holes between baffle splice and baffle should align. If alignment issues persist, install additional #7 screws as needed into holes closest (1/2") to baffle joints. Rockfon recommends installing one side of splice to baffle on the ground, prior to suspending carrier, for easiest installation.



If perforated baffles are installed, black or matching splices are recommended to avoid seeing the splices through the baffle perforations.

**Note:** Once spliced, baffles become inaccessible. See **section 4** for accessibility instructions.

## 2.4 Cutting Metal Baffles

Cutting Sequence baffles is easy with a miter or circular saw with an appropriate metal cutting blade for accuracy of cuts. Use all appropriate personal protective equipment, as well as all appropriate safety precautions. Use an appropriate sized block inside the baffle. Place the baffle firmly against the saw's back stop. Once the blade is at full speed, slowly cut the baffle. Pushing the saw too quickly will result in sharp edges and poor cut quality.

**Note:** Maintaining a sharp blade is crucial to clean cuts. Be cautious of the cut edges as burrs and cuts are extremely sharp. Use a metal file to remove burrs and sharp edges prior to installation, as the burrs may affect how end caps or splices fit in the baffle.

## 3. End Cap Installation

When baffle ends are exposed, or if using taller profiles such as 10" and 12", Rockfon recommends end caps in matching finishes for Standard Colors, Rockfon Color-All™, Custom Colors, Woodlands, Metalwood, and Woodscenes finishes. Install end cap into open end of baffle. Use #7 screw in pre-set fastener holes to fasten end cap in place.



## 4. Accessibility

Plenum access is often required to service HVAC, Plumbing, and Electrical. In order to access the plenum, individual baffles must be removed. First locate the area requiring access and create the access area as described below.

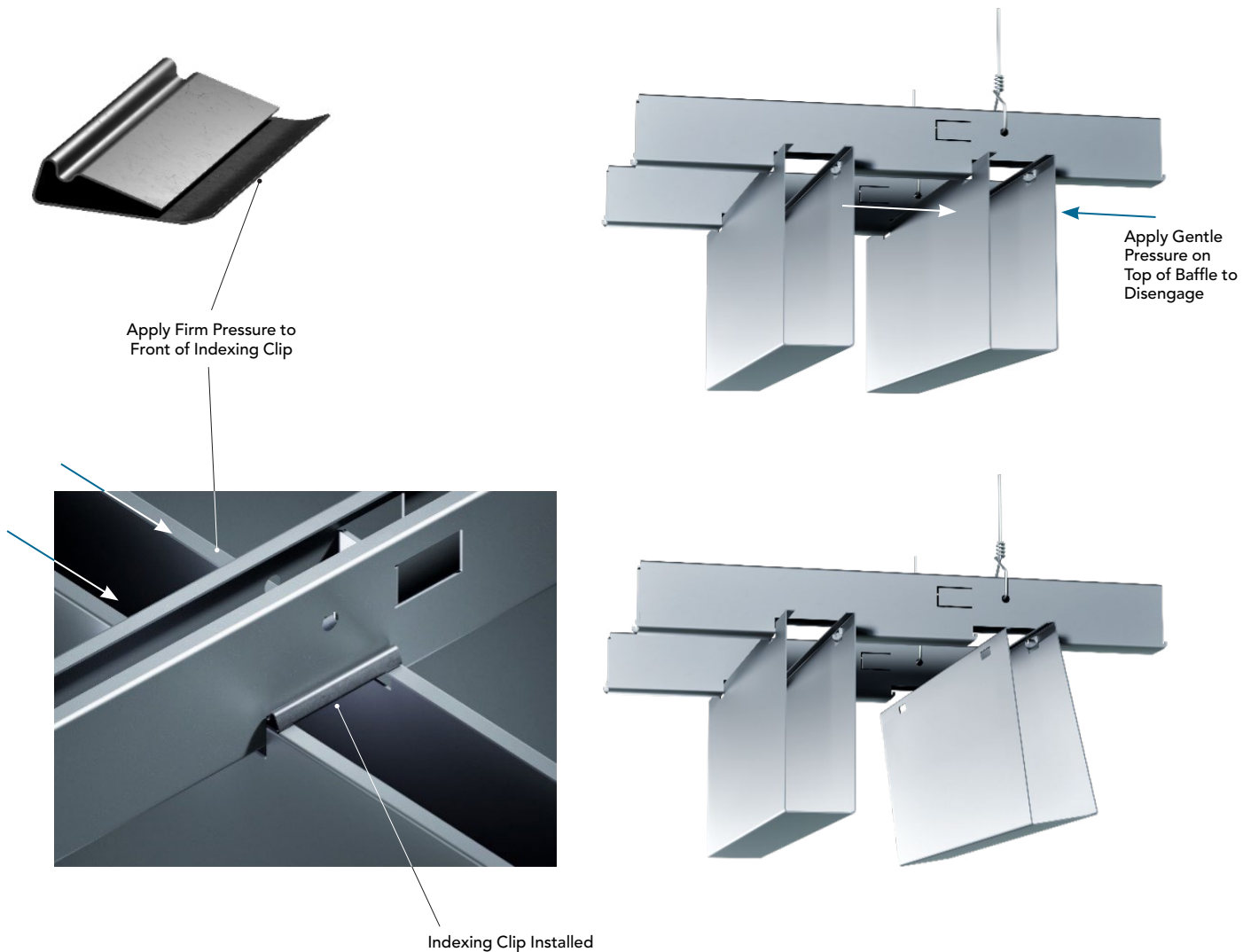
### 4.1 Creating Access Areas

When baffles are spliced together, the area becomes inaccessible. In order to create access areas, **individual baffles must have end caps installed on either end**. These baffles can be removed individually.

**Note:** Once one baffle is installed with end caps on both sides, the next baffle in the row will have an exposed end. Install appropriate end cap on exposed end for best aesthetics.

### 4.2 Individual Baffle Removal

Once baffles are installed with end caps on both ends, individual baffles can be easily removed. First, remove retention clips of desired baffles by applying firm pressure to front of retention clip. Then, gently press inwards on top edges of the baffle until disengaged from the carrier notches, and remove.



## 5. Service Integration

### 5.1 Sprinklers

Rockfon Sequence Baffles with the RockLock Carrier System is an open plenum system with a wide range of on-center baffle spacings available. Depending on baffle layout, baffles may obscure sprinkler pattern. Consult local NFPA codes to verify appropriate openness and sprinkler locations.

## 6. Cleaning

Select a mild, non-abrasive cleaning agent typically used for cleaning painted or reflective surfaces.

Never use abrasive cleaning agents as such treatments may scratch, mar, alter, discolor, and/or remove the finish.

Before cleaning the finish, perform a trial test on a section of the finish that will be hidden from view once installed.

This will ensure that the cleaning agent selected is appropriate and will not damage the finish in question.

Once an appropriate cleaning solution has been selected, care should be taken to use only that amount which is necessary.

Do not soak the ceiling components with the solution.

Use a clean soft sponge or cloth when applying the cleaning agent in order to ensure that the applicator does not contain any abrasive elements that may damage the finish in question.

Any excess cleaning solution should be removed immediately so that the solution does not dry and possibly leave a residue.

If a large area needs to be cleaned, it's advisable to break the area down into smaller, more manageable sections so that adequate time is available to complete each phase of the cleaning cycle.

After cleaning the soiled or smudged area, wipe the surface with a dry soft cloth to remove any residual cleaning solution and dry the area. Use a clean damp cloth to remove any residue that cannot be removed with the dry cloth. Repeat the drying process.

After the components are clean, allow a few minutes for air drying before installation. It is important that the clean components are dry because other ceiling material, such as ceiling board or insulation, which may come into contact with the cleaned components, can be susceptible to damage from moisture. For additional cleaning information, please refer to please refer to Rockfon® "[Cleaning and Maintenance Procedures](#)" Tech Note.

Rockfon® is a registered trademark  
of ROCKWOOL Group.

2025 | Subject to alterations in range and product technology without prior notice. Rockfon accepts no responsibility for printing errors.  
® ROCKWOOL IAS 2022. All rights reserved. ® denotes a trademark that is registered in the United States of America.

081525



**Rockfon**  
4849 S. Austin Ave.  
Chicago, IL 60638 USA

Tel. +1-800-323-7164  
[cs@rockfon.com](mailto:cs@rockfon.com)  
[rockfon.com](http://rockfon.com)